

INSTALLATION INSTRUCTIONS FOR SECURE FLEX® CONNECTOR KIT (MODEL NO. FVK36) (CATALOG NO. H7748) USED WITH DIRECT-VENT GAS FIREPLACE APPLICATIONS ONLY

KIT CONTENTS

- 2 ea. 36” Flex Component
- 1 ea. Gear Clamp 7”
- 1 ea. Gear Clamp 4”
- 1 ea. SV4.5LA 2” to 7-1/2” Adjustable Length Slip Section
- 6 ea. Spring Spacers (inside the flex component)
- 1 ea. Instruction Sheet

GENERAL INFORMATION

This **Secure Flex®** venting kit may be used when venting an IHP direct-vent gas fireplace. It contains 3’ of compressed flex vent, fitted to an adaptor, a second adaptor, two gear clamps and a single SV4.5LA slip pipe.

If you encounter any problems, need clarification of these instructions or are not qualified to properly install this kit, contact your local distributor or dealer.

Read this instruction sheet in its entirety before beginning the installation.

ALL WARNINGS AND PRECAUTIONS IN THE INSTALLATION AND OPERATION MANUAL PROVIDED WITH THE APPLIANCE APPLY TO THESE INSTRUCTIONS.

INSTALLATION INSTRUCTIONS

IMPORTANT: INSTALLATION SHOULD BE PERFORMED BY A QUALIFIED TECHNICIAN ACCORDING TO THESE INSTRUCTIONS, THE INSTALLATION INSTRUCTIONS FOR THE PARTICULAR APPLIANCE BEING INSTALLED, AND LOCAL CODES.

GENERAL APPLICATIONS

This kit is designed to accommodate attaching two separate sections of Rigid **Secure Vent®** runs. The slip pipe component is to be installed over the leading end of the second rigid run to change its orientation from the leading (female) connection to that of the male (normally trailing) end. Once re-oriented, this end will now match the trailing end of the first rigid run and both ends can be mated with the flex adaptors of this kit.

Connect the fixed (attached) adaptor to the slip pipe and the loose adaptor to the trailing end of the first run. Pull the flex lengths to the second adaptor (inner first, outer last) and secure it to the adaptor with the provided gear clamps. For detailed instructions, refer to the following information.

Refer to the fireplace installation instructions for approved venting configurations. Rigid **Secure Vent** (SV4.5) direct-vent components are shown in these configurations; however, **Secure Flex** vent kits may also be used. All the restrictions such as venting length, height, routing, horizontal to vertical ratio requirements or clearance considerations as detailed in the fireplace installation instructions for rigid vent must be adhered to for the flexible vent.

Expanding Secure Flex and Secure Flex Joining Restrictions -

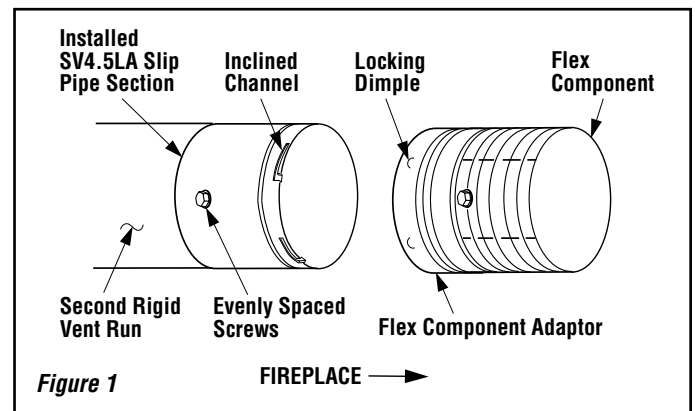
Flexible vent pipe is packaged and shipped in its contracted state. When installing flexible vent pipe, its length may be expanded up to twice its contracted size. This 3’ section of flexible pipe may be expanded up to 6’. The 3’ section may be cut to any length to suit a particular application; however, **the flex sections must not be joined together to extend a vent run**. After expanding the vent, check that the vent’s spring spacers are spaced every 12” or less.

Inserting Secure Flex into a run of a Secure Vent (Rigid Vent) -

This **Secure Flex** component may be inserted into a vent run made up of rigid **Secure Vent** (SV4.5) vent sections. The flex adaptor (87L00) and the slip pipe (SV4.5LA) must be used when connecting this flexible pipe component to the rigid.

Installation of SV4.5LA Slip Pipe Section -

Locate the leading end of the second rigid run as identified by the four evenly spaced dimples ringing the vent pipe outer component, shown in **Figure 1**. Ensure that SV4.5LA can freely slip over the pipe by at least 6”, if not install at least a 6” length of rigid **Secure Vent** pipe. Drill three pilot holes through the SV4.5LA and the outer vent 120 degrees apart and secure SV4.5LA to the vent pipe with three screws.

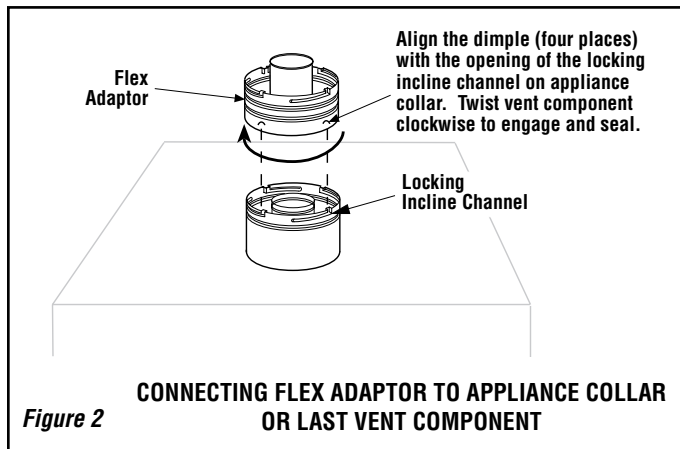


Connecting the Flex Component to the SV4.5LA (refer to Figure 1) -

Align the dimpled end of the flex component adaptor over the previously installed SV4.5LA collar, adjusting the radial alignment until the four locking dimples of the adaptor are aligned with the inlets of the four incline channels of the SV4.5LA. Push on the adaptor until it fully engages, then twist the adaptor clockwise running the dimples down and along the incline channels until they seat at the end of the channels. Refer to **Figure 1**.

Installation of Secure Flex® Adaptor (87L00) -

The **Secure Flex**® kit comes with an adaptor (catalog no. 87L00) that can be fitted to the appliance collar or the inclined channel end (male) of the last (trailing) **Secure Vent**® section (SV4.5) in a rigid system. Align the dimpled end of the adaptor over the previously installed section or appliance collar, adjusting the radial alignment until the four locking dimples of the adaptor are aligned with the inlets of the four incline channels of the last vent section or collar. Push on the adaptor until it fully engages, then twist the adaptor clockwise running the dimples down and along the incline channels until they seat at the end of the channels. See **Figure 2**.



Attaching the Flexible Vent to the Adaptor (See parts A and B below and refer to Figure 3) -

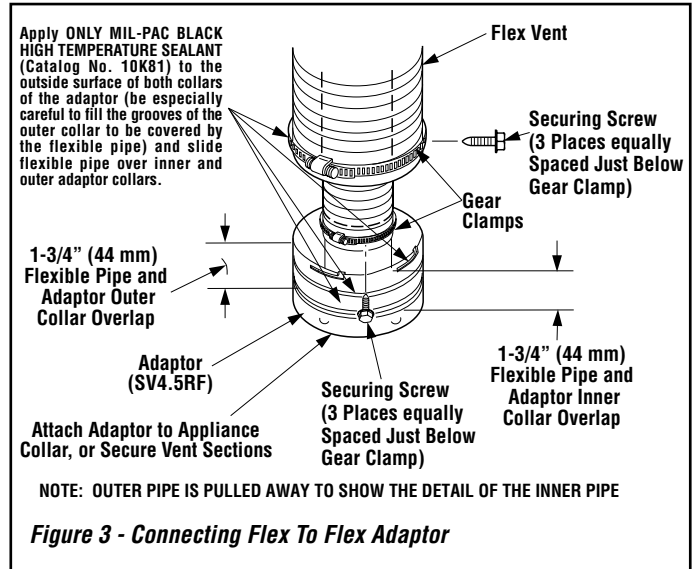
A. Install the Inner Flex Pipe -

1. Install the small gear clamp loosely around the inner flexible vent pipe, push it back out of the way.
2. Apply a bead of **Mill-Pac Black (700°F) high temperature sealant - Catalog No. 10K81** to the inner adaptor collar, approximately 1/2" from the end.
3. Pull and extend the inner flexible vent pipe.
4. Slide the inner flex pipe over the adaptor collar. Overlap the flexible vent pipe with the adaptor collar 1-3/4", ensuring that flexible vent pipe is free from damage or tears.
5. Slide the gear clamp down to approximately 3/4" from the end of the flexible pipe. Tighten the clamp fully to secure the flexible pipe to the inner adaptor collar.
6. Install **three screws 120 degrees apart** through the flexible vent pipe and into the adaptor collar just below the gear clamp to provide additional security to the connection.

B. Install the Outer Flex Pipe -

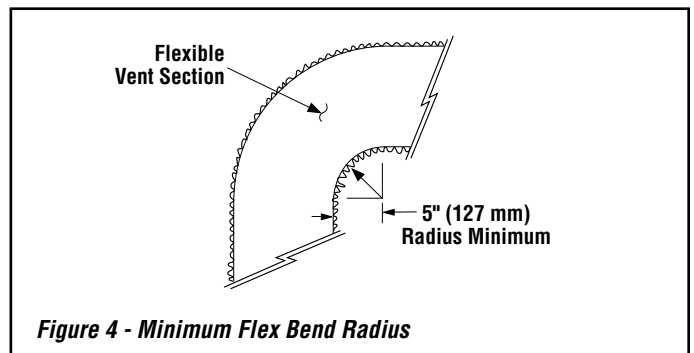
1. Install the large gear clamp loosely around the outer flexible vent pipe, push it back out of the way.
2. Apply a bead of **Mill-Pac Black (700°F) high temperature sealant - Catalog No. 10K81** to the outer adaptor collar; to the grooves of the collar which extend approximately 1" from the end and to the flat surface, approximately 1-3/8" from the end.

3. Pull and extend the outer flexible vent pipe.
4. Slide the outer flex pipe over the adaptor collar. Overlap the flexible vent pipe with the adaptor collar 1-3/4", ensuring that the flexible vent pipe is free from damage or tears.
5. Slide the gear clamp down to approximately 3/4" from the end of the flexible pipe. Tighten the clamp fully to secure the flexible pipe to the outer adaptor collar.
6. Install **three screws 120 degrees apart** through the flexible vent pipe and into the adaptor collar just below the gear clamp to provide additional security to the connection.



Routing Secure Flex® Vent -

Ensure that the flex vent is properly routed to provide the required clearance. Do Not allow the flexible vent to bend in a radius tighter than 5" (127 mm). Refer to **Figure 4**. Space out the internal flex vent spacers evenly and avoid kinking of inner pipe. We recommend venting should be sloped upward toward the termination a minimum of 1/4" rise per foot (20mm per meter) of horizontal vent run. Support the horizontal vent sections using metal straps spaced at 2' (0.61 meter) intervals.



NOTE: DIAGRAMS AND ILLUSTRATIONS ARE NOT TO SCALE.

IHP reserves the right to make changes at any time, without notice, in design, materials, specifications, prices and also to discontinue colors, styles and products. Consult your local distributor for fireplace code information.

